

21 July 2020

USA-CEHNC /MEGA-586

Mr. Andrew Thompson
U.S. Army Engineering & Support Center, Huntsville
PO Box 1600
Huntsville, AL 35807-4301

Subject: Final Landuse Controls Installations Letter Report – July 2020

Reference: RAB Support and Implement LUCs, - Former Camp Croft
Contract No. W912DY-17-D-0006, Task Order W912DY18F0456

Attachments:

1. Camp Croft Sign Placement Map
2. Photograph Log of Sign Placement
3. Log book entries
4. Excel file of Sign location coordinates

Dear Mr. Thompson:

USA Environmental, Inc. submits the subject letter report to document the sign installation and delivery of the educational material for the Implementation of the Land Use Controls at Former Camp Croft.

1.0 Introduction

In accordance with the Land Use Control Implementation Plan, USA conducted the implementation of the Land Use Controls (LUCs) required by the January 2019 Decision Document (DD) for the Former Camp Croft Munitions Debris Areas (Project 03) and the September 2018 DD for the Former Camp Croft Range Complex Remaining Lands (Project 05). The site remedy for the two projects is LUC implementation. More specifically, the type of LUC is Public Education consisting of educational materials and signage developed to enhance the community's general understanding of site conditions.

The Former Camp Croft is located in the upstate of South Carolina, less than 10 miles southeast of downtown Spartanburg, SC. The United States Department of Defense (DoD) acquired 19,044.46 acres, comprising 19,039.04 acres in fee, 5.42 acres in easement interests, six no-area easements, and two no-area licenses. Acquisition was accomplished by condemnation. Land use prior to DoD use was a mix of woodlands, farms, and private residences.

Project 03 Munitions Debris (MD) Areas is comprised of five MD areas totaling approximately 269 acres of mixed land use areas that include residential and commercial properties and a golf course. Project 05 Range Complex Remaining Lands is comprised of approximately 9,093 acres and is completely within the Craft State Park boundary. Historical information related to the use of the Former Camp Croft indicated the potential for Munitions and Explosives of Concern (MEC) to be present within the Project 03 and Project 05 boundaries.

LUCs in the form of signage and educational materials were developed to enhance the community's general understanding of site conditions. Signage was designed to inform the public of the potential

presence of MEC and what to do if possible MEC is encountered. Design of signage was based on the following considerations:

- Primary message being the Army’s standard 3Rs message for Unexploded Ordnance (UXO) awareness
- Minimizing additional information or wording (e.g., “Danger”) that would cause an unnecessary level of concern for public use areas where the probability of encountering MEC is low or very low
- Fitting the message to a sign size of at least 12 inches wide by 18 inches high
- Adjusting background color and information to be compatible with other park signs to maintain effectiveness without presenting an eyesore.

Figure 1 depicts the two sign designs installed under this effort.



Figure1: Signage

In addition, a trifold brochure developed for former Camp Croft (outside and inside material) and distributed to the Spartanburg Library and Croft State Park’s Office is presented in Figure 2 and Figure 3.

3Rs Explosives Safety Guide
FORMER CAMP CROFT
SPARTANBURG, SC

BACKGROUND

Camp Croft Infantry Replacement Training Center (RTC), which was officially activated on January 10, 1941, consisted of two general areas: a series of firing ranges and a troop housing area with attached administrative headquarters, with housing for 20,000 trainees and support personnel. Camp Croft RTC served as one of the Army's principal RTCs, approximately 250,000 soldiers were trained at the facility. Camp Croft was also a prisoner-of-war camp during World War II.

Camp Croft had at least 12 live ammunition training ranges used for small arms ammunition, anti-tank rockets, anti-aircraft artillery, 81 millimeter (mm) mortars, and 81mm mortars. The training range impact areas comprised 16,929 acres, a 175-acre grenade court was also located at the camp. In November 1946, the entire installation (just over 19,000 acres) was declared surplus and accessed to the War Assets Administration in 1947. Over the next 3 years, the land was either sold or transferred by quitclaim to organizations, business interests, or private interests. One of the most significant conveyances was 7,089 acres by quitclaim deed to the South Carolina Commission of Forestry; the property is now known as Croft State Park.

IF YOU ENCOUNTER MUNITIONS

Camp Croft Emergency Contacts

Croft State Park Office	Phone: (864) 585-1283
Or Call 911	

ATTENTION: Stay on Designated Trails

We must never walk on or near an unexploded munition. This is a deadly hazard. Stay on designated trails and do not touch, move, or disturb any munitions. If you see a munition, report it to the Croft State Park Office of Forestry. Do not attempt to remove or dispose of munitions on your own.

FOR YOUR SAFETY, PLEASE DO NOT:

- Recognize: Do not touch, move, or disturb any munitions.
- Retreat: Do not approach, touch, move, or disturb any munitions.
- Report: Do not attempt to remove or dispose of munitions on your own.

Follow the 3Rs
 of Explosives Safety

Visit the US Army's Explosives Safety Education website:
www.denix.osd.mil/uxo

Figure 2: 3Rs Tri-Fold Exterior

Follow the 3Rs

Recognize **Retreat** **Report**

Recognizing when you may have encountered a munition

Recognizing when you may have encountered a munition is the most important step in reducing the risk of injury or death. Munitions may be encountered on land or in the water. They may be easy or hard to identify.

To avoid the risk of injury or death:

- Never move, touch, or disturb a munition or suspect munition.
- Be aware that munitions do not become safer with age; in fact, they may become more dangerous.
- Do not be tempted to take or keep a munition as a souvenir.

Munitions come in many sizes, shapes, and colors. Some may look like bullets or bombs, while others look like pipes, small cans, or even a car muffler. Whether whole or in parts, new or old, shiny or rusty, munitions can still explode. The easiest way to avoid injury or death is to stay out of areas marked with warning signs or charted as restricted.

WARNING
 POSSIBLE UNEXPLODED ORDNANCE!

Retreat

Do not touch, move, or disturb it, but carefully leave the area.

Avoid death or injury by recognizing that you may have encountered a munition and promptly retreating from the area.

If you encounter what you believe is a munition, do not touch, move, or disturb it. Instead, immediately and carefully leave the area by retracing your steps—going out the way you entered. Once safely away from the munition, mark the path (e.g., with a piece of clothing) so police can find the munition.

Report

Immediately notify the police.

Protect yourself, your family, your friends, and your community by immediately reporting munitions or suspected munitions to the police. Report what you saw and where you saw it in as much detail as possible. This helps the police and military or civilian explosive ordinance disposal personnel find, evaluate, and address the situation.

If you believe you may have encountered a munition, call the emergency contacts on the back of this brochure and report:

- The area where you suspect that you encountered a munition.
- Its general description. (Remember, do not approach, touch, move, or disturb it.)
- When possible, provide:
 - Its estimated size
 - Its shape
 - Any visible markings, including coloring.

Follow the 3Rs of Explosives Safety

Recognize When you may have come across a munition, and that munitions are dangerous;

Retreat Do not approach, touch, move, or disturb a suspect munition, but carefully leave the area; and

Report Immediately report what you saw and where you saw it to the Croft State Park at (864) 585-1283 or Call 911

Figure 3: 3Rs Tri-Fold Interior

2.0 Field Effort

The Team mobilized to Spartanburg, South Carolina on 21 June 2020 and began the field effort at Croft State Park on 22 June 2020. The field effort began with a site tour accompanied by State Parks personnel to establish the locations of all the signs to be installed. Prior to the site tour, an in-brief teleconference with US Army Corps of Engineers (USACE) Project Delivery Team (PDT) was conducted to establish goals and expectations for the site tour. During the tour, 94 locations for the sign installation were established. Of the 94 sign installed, 28 were "A" signs and 66 were "B" signs. "A" signs were installed mainly in trailheads and open use areas and "B" signs were installed in designated wooded area. After the site tour, an out brief was conducted with the USACE PDT to summarize the site tour findings. During the site tour, Mr. Adin Fell, representative for South Carolina Parks, Recreation and Tourism, requested that the "B" signs be placed on mature trees with about ¾ inch between the tree and the sign to allow for growth of the tree. This is less invasive to the areas where they will be installed. This was done for all "B" signs. See Attachment 1 Camp Croft Sign Placement Map for the location of all signs installed.

The signs were installed from 22 June to 24 June 2020. All signs were installed according to direction with UXO avoidance safety protocols. No accidents or near misses were reported. Summary pictures of the sign installation operations are included in Attachment 2. Logbook entries for the field effort are included in Attachment 3. Attachment 4 is an Excel spreadsheet with all of the sign GPS coordinates to support future inspection and maintenance activities.

On June 23 2020, 500 Tri-folds were delivered to the Library and the remaining 4,500 were delivered to the Croft State Park's office.

Upon completion of the LUC installation operations, all personnel and equipment demobilized from the site.

Distribution of this letter report is as noted below. If you have any questions please contact me.

Sincerely,



Tess Rottero, PG PMP
Sr. Project Manager
USA Environmental, Inc.
E-mail: trottero@usatampa.com
C: (813) 997-2105

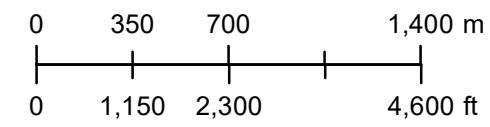
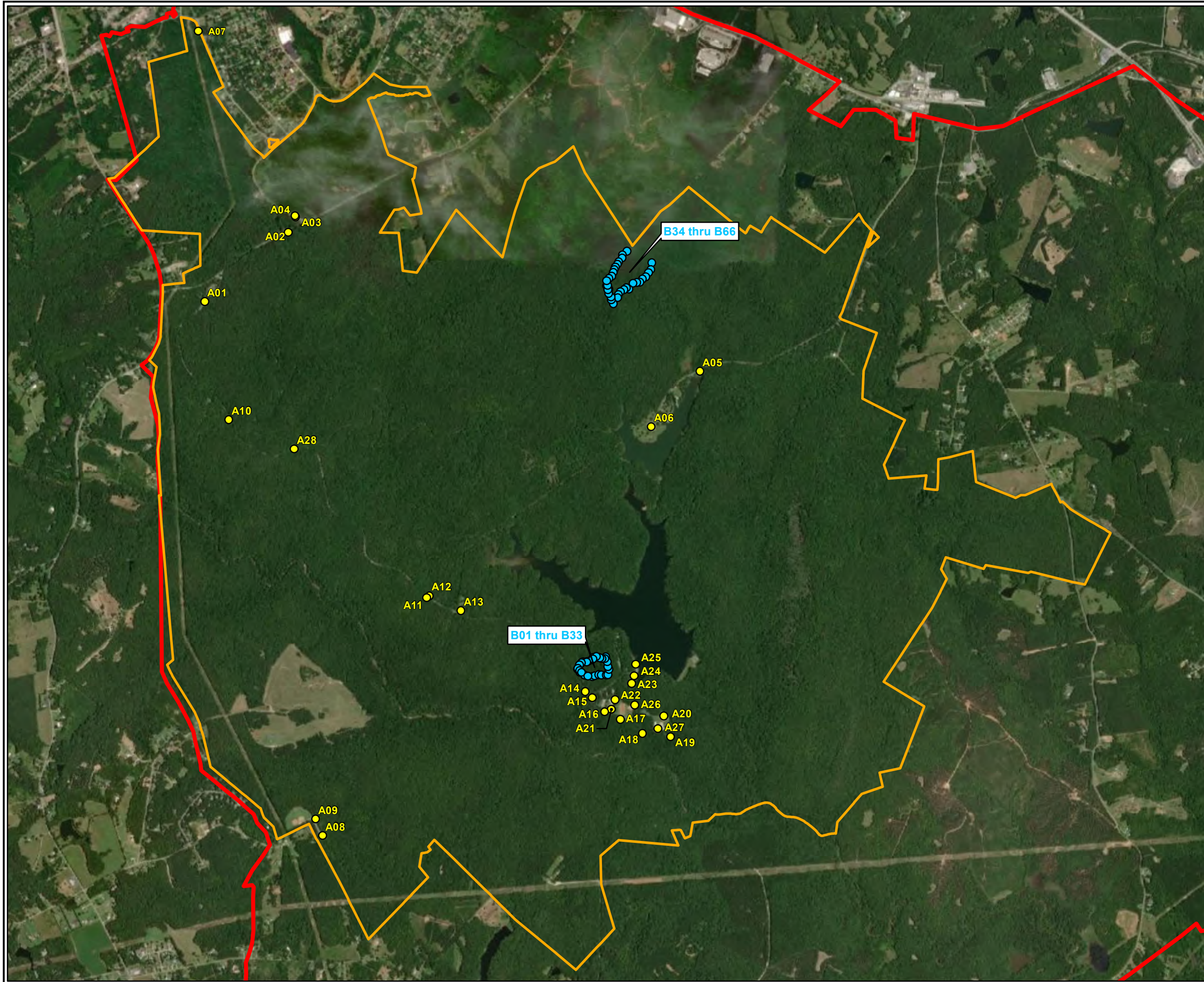
Distribution:

COR/Project Manager: Andrew Thompson; US Army Corps of Engineers, Huntsville Center; 4901 University SQ, Suite 19; Huntsville, AL 35816-1887. Andrew.L.Thompson@usace.army.mil
Phone: 256- 895-7732.

Technical Manager: Donna Davis; US Army Corps of Engineers, Huntsville Center; 4900 University Square, Suite 8; Huntsville, AL 35816-1887. Yuenyen.L.Davis@usace.army.mil Phone: 256-895-7485.

Geographical Project Manager: Ray Livermore; U.S. Army Corps of Engineers, Wilmington District; ATTN: CESAW-ECP-EG; 69 Darlington Avenue; Wilmington, North Carolina 28403
Raymond.R.Livermore@usace.army.mil
Phone: 910-251-4702.

FUDS Project Manager; Frank Cerio U.S. Army Corps of Engineers, Savannah District; ATTN: CESAS-PM-H; 100 W. Oglethorpe Ave; Savannah, GA 31401. Frank.j.Cerio@usace.army.mil
Phone: 912-652-5120.



Data is projected to the UTM Coordinate System:
NAD 1983 UTM Zone 17N

Former Camp Croft

Sign Location As Built Map

Spartanburg, SC

Legend

Sign Type

- "A" Sign Locations
- "B" Sign Locations
- Croft State Park
- Former Camp Croft Boundary



US Army Engineering And Support
Center - Huntsville, Alabama

Drawn By: CLH	Scale: 1 inch = 700 meters
Checked By:	Date Drawn: 7/20/2020
Submitted By:	Revision Date: Rev No.

Path: S:\Camp Croft Removal\MXD\Work Plan\Camp Croft Sign Placement Map.mxd

Attachment 2

Photographic Log of Sign Installation Operations

“A” Signs on Trailheads and Use Areas







“B” Signs Around Hill Behind the Camp
Dump Site







“B” Signs Off McFaddin Road





Camp Croft LogBook pg1

Camp Croft LogBook pg2

Camp Croft LogBook pg3

Camp Croft LogBook pg4

Camp Croft LogBook pg5

Camp Croft LogBook pg6

23 JUN 20

cool

EXISTING MATURE TREES

TO ERECT SIGNS, LESS OF
A FOOT PRINT.

1245 - TAKE TRUCK TO HOTEL.

1330 - ARR BACK AT MAINTENANCE

SITE TO MEET THE SIGN INSTALLERS.

1410 - SIGN A1 BY GATEHOUSE.1430 - SIGN A2 KELSEY

CREEK TRAIL.

1445 - SIGN A3 & A4PARKING LOT DAIRY RIDGE
ROAD.1505 - SIGN A5 EDWIN JOHNSON
TRAIL.1515 SIGN A6 ROUNDABOUT
@ JOHNSON LAKE.1540 SIGN A7 PALMETTO
TRAIL.1610 SOUTHSIDE LOOP TRAIL
SIDE A81620 A9 TRAIL BY BALLPARK1645 A10 LEE CEMETERY

1730 END OF DAY

0800 - SAFETY BRIEF.

0815 - SIGN A-11 LAKE JOHNSON/
FAIRFOREST CONNECTOR TRAIL.0825 - SIGN A-12 LAKE JOHNSON/
CONNECTOR.0835 A-13 @ PICNIC AREA.0845 A-14 CRAIG TRAIL0855 A-15 RANGER OFFICE.0905 A-16 PALMETTO TR.

ACROSS FROM RECTOR CABIN.

0912 A-17 ACROSS FROM

SHOW RING, FAIRFOREST

LOOP TRAIL.

0920 - A-18 NATURE TRAIL0930 - A-19 FOSTERS MILL

LOOP.

0940 - A-20 NE OF STABLES0950 - A-21 BESIDE INFORMATION ~~SHED~~ KIOSK NW OF

SHOW RING.

1000 - A-22 BEST RESTROOM

BESIDE ACTIVITY CENTER.

1013 - A-23 LAKE JOHNSON

PARKING LOT.

1015 A-24 INFORMATION

KIOSK @ LAKE JOHNSON

1022 - A-25 PAST BOAT HOUSE
RIGHT OF SIDE WALK LAKE
JOHNSON.

1045 - A-26 TRAIL
EAST OF SHOW RING

1115 - A-27 BY THE STABLES

1145 - A-28 McFADDEN / PARK Rd

1200 - 1230 LUNCH

1310 - B-1 HILL

BEHIND CAMP DUMP.

1317 - B-2 " " "

1324 - B-3 " "

1328 - B-4 " "

1332 - B-5 " "

1335 - B-6 " "

1337 - B-7 " "

1040 - B-8

1342 - B-9

1345 - B-10

1350 - B-11

1352 - B-12

1356 - B-13

1359 - B-14

1401 - B-15

1403 - B-16

1406 - B-17

1408 - B-18

1410 - B-19

1413 - B-20

1415 - B-21

1418 - B-22

1421 - B-23

1425 - WATER BREAK.

1430 - BREAK OVER

1435 - B-24

1437 - B-25

1440 - B-26

1445 - B-27

1447 - B-28

1449 - B-29

1453 - B-30

1457 - B-31

1459 - B-32

1504 - B-33

24 Jun 2020

0800 - SAFETY BRIEF

0805 - DEPART FOR McFADDEN Rd.

0819 - ARR @ SITE,

0823 - B-34 *MOVED*

0825 - B-35

0828 - B-36

0831 - B-37

0835 - B-38

0837 - B-39

0840 - B-40

0843 - B-41

0845 - B-42

0848 - B-43

0851 - B-44

0853 - B-45

0905 - B-46

0909 - B-47

0912 - B-48

0915 - B-49

0917 - B-50

0919 - B-51 *COMPLETE*

0921 - B-52

0925 - B-53

0930 - B-54

0932 - B-55

0933 - B-56

0935 - B-57

0939 - B-58

0940 - B-59

0942 - B-60

0944 - B-61

0946 - B-62

0948 - B-63

0950 - B-64

~~1100 - B-65~~

~~B-66~~

~~||||~~

~~||||~~

~~||||~~

~~||||~~

||||

~~||||~~

||| ✓

MAKE CORRECTION
IN TABLET. 33 IN
BEHIND DUMP.

33 OFF
McFADDEN

1.5

FROM
RANK RD

1
28
~~66~~
94

• A1 - 34.890°N / 873°W ± 3.2m
 ON SPEED LIMIT SIGN NEAR
 GARAGE HOUSE ON PARK Rd.

- A2 - 34.894°N / 866°W ± 6.4m
- A3 - 34.895°N / 865°W ± 9.6m
- A4 - 34.896°N / 865°W ± 6.4m
- A5 - 34.885°N / 832°W ± 9.6m
- A6 - 34.882°N / 836°W ± 9.6m
- A7 - 34.908°N / 81.873°W 9.6m
- A8 - 34.854°N / 863°W ± 3.2m
- A9 - 34.855°N / 81.863°W ± 3.2m
- A10 - 34.882°N / 870°W ± 9.6m
- A11 - 34.870°N / 81.854°W ± 2.6m
- A12 - 34.870°N / 81.854°W ± 5.4m
- A13 - 34.869°N / 81.851°W ± 2.5m
- A14 - 34.864°N / 81.841°W ± 2.6m
- A15 - 34.863°N / 81.841°W ± 5.4m
- A16 - 34.862°N / 81.840°W ± 9.6m
- A17 - 34.862°N / 81.838°W ± 9.6m
- A18 - 34.861°N / 81.836°W ± 2.6m
- A19 - 34.861°N / 81.834°W ± 4.3m
- A20 - 34.862°N / 81.835°W ± 5.4m
- A21 - 34.862°N / 81.839°W ± 5.4m
- A22 - 34.863°N / 81.839°W ± 4.3m
- A23 - 34.864°N / 81.837°W ± 5.4m
- A24 - 34.865°N / 81.837°W ± 5.4m

- A25 - 34.866°N / 81.837°W ± 3.2m
- A26 - 34.863°N / 81.837°W ± 4.3m
- A27 - 34.861°N / 81.835°W ± 3.2m
- A28 - 34.880°N / 81.865°W ± 5.4m
- B1 - 34.865°N / 81.841°W ± 9.6m
- B2 - 34.865°N / 81.842°W ± 9.6m
- B3 - 34.865°N / 81.842°W ± 9.6m
- B4 - 34.865°N / 81.842°W ± 10.7m
- B5 - 34.865°N / 81.842°W ± 9.6m
- B6 - 34.866°N / 81.841°W ± 10.7m
- B7 - 34.866°N / 81.841°W ± 10.7m
- B8 - 34.866°N / 81.841°W ± 10.7m
- B9 - 34.866°N / 81.841°W ± 10.7m
- B10 - 34.866°N / 81.840°W ± 10.7m
- B11 - 34.866°N / 81.840°W ± 10.7m
- B12 - 34.866°N / 81.840°W ± 10.7m
- B13 - 34.866°N / 81.840°W ± 10.7m
- B14 - 34.866°N / 81.839°W ± 10.7m
- B15 - 34.865°N / 81.839°W ± 10.7m
- B16 - 34.865°N / 81.839°W ± 9.6m
- B17 - 34.865°N / 81.839°W ± 10.7m
- B18 - 34.865°N / 81.839°W ± 7.5m
- B19 - 34.865°N / 81.840°W ± 10.7m
- B20 - 34.865°N / 81.840°W ± 10.7m
- B21 - 34.865°N / 81.840°W ± 10.7m
- B22 - 34.865°N / 81.841°W ± 10.7m

B23-34.865°N/81.841°W ± 10.7m
B24-34.865°N/81.841°W ± 10.7m
B25-34.865°N/81.842°W ± 10.7m
B26-34.865°N/81.842°W ± 10.7m
B27-34.866°N/81.842°W ± 10.7m
B28-34.866°N/81.841°W ± 10.7m
B29-34.866°N/81.841°W ± 10.7m
B30-34.866°N/81.841°W ± 10.7m
B31-34.866°N/81.841°W ± 10.7m
B32-34.866°N/81.840°W ± 9.6m
B33-34.866°N/81.840°W ± 10.7m
B34-34.891°N/81.840°W ± 11m
B35-34.891°N/81.840°W ± 10.7m
B36-34.892°N/81.839°W ± 3.2m
B37-34.892°N/81.839°W ± 4.2m
B38-34.892°N/81.839°W ± 10.7m
B39-34.892°N/81.839°W ± 3.2m
B40-34.892°N/81.839°W ± 9.6m
B41-34.893°N/81.839°W ± 9.6m
B42-34.893°N/81.838°W ± 4.3m
B43-34.893°N/81.838°W ± 10.7m
B44-34.893°N/81.838°W ± 9.6m
B45-34.891°N/81.840°W ± 9.6m
B46-34.891°N/81.840°W ± 9.6m
B47-34.891°N/81.840°W ± 9.6m
B48-34.891°N/81.840°W ± 9.6m

B49-34.891°N/81.840°W ± 10.7m
B50-34.890°N/81.839°W ± 11.8m
B51-34.890°N/81.839°W ± 10.7m
B52-34.890°N/81.839°W ± 11.8m
B53-34.890°N/81.839°W ± 10.7m
B54-34.890°N/81.839°W ± 10.7m
B55-34.891°N/81.839°W ± 10.7m
B56-34.891°N/81.838°W ± 10.7m
B57-34.891°N/81.838°W ± 9.6m
B58-34.891°N/81.838°W ± 4.3m
B59-34.891°N/81.838°W ± 10.7m
B60-34.891°N/81.837°W ± 10.7m
B61-34.891°N/81.837°W ± 9.6m
B62-34.891°N/81.837°W ± 10.7m
B63-34.892°N/81.837°W ± 10.7m
B64-34.892°N/81.836°W ± 9.6m
B65-34.892°N/81.836°W ± 10.7m
B66-34.893°N/81.836°W ± 9.6m

SCHONSTEDT # 1310