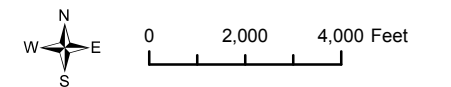


Former Camp Croft, SC  
Transect Spacing

Project Number 00017	Date APRIL 2011	Exhibit 1
-------------------------	--------------------	--------------

**KEY**

- ★ UXO
- MD
- MEC
- Approximate Park Boundary
- Trash Pile - No Investigation
- MRS
- Areas of Potential Interest
- Former OOU
- Approximate Former Camp Croft Boundary
- Lake
- Ground Recon - 50' Transect Spacing
- Ground Recon - 112' Transect Spacing
- Ground Recon - 416' Transect Spacing
- Mag & Dig - 112' Transect Spacing
- Mag & Dig - 173' Transect Spacing
- Mag & Dig - 416' Transect Spacing



**Source(s)**

USAESCH, USGS

**Projection**

UTM Zone 17 North, NAD83

**Notes**

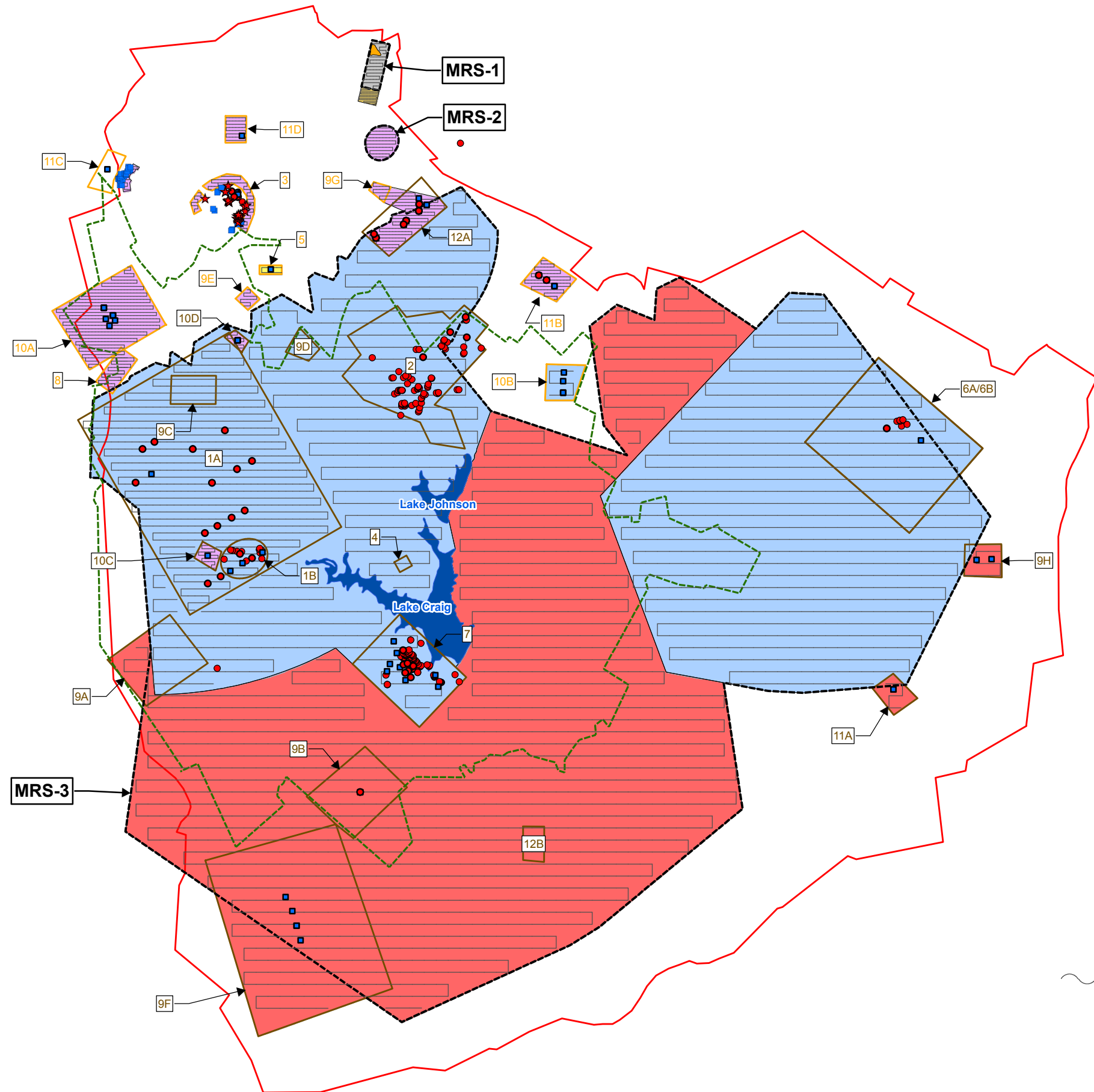
Checked By SCM	Engineering Scale 1"=4,000'	Drawn By ATD
-------------------	--------------------------------	-----------------



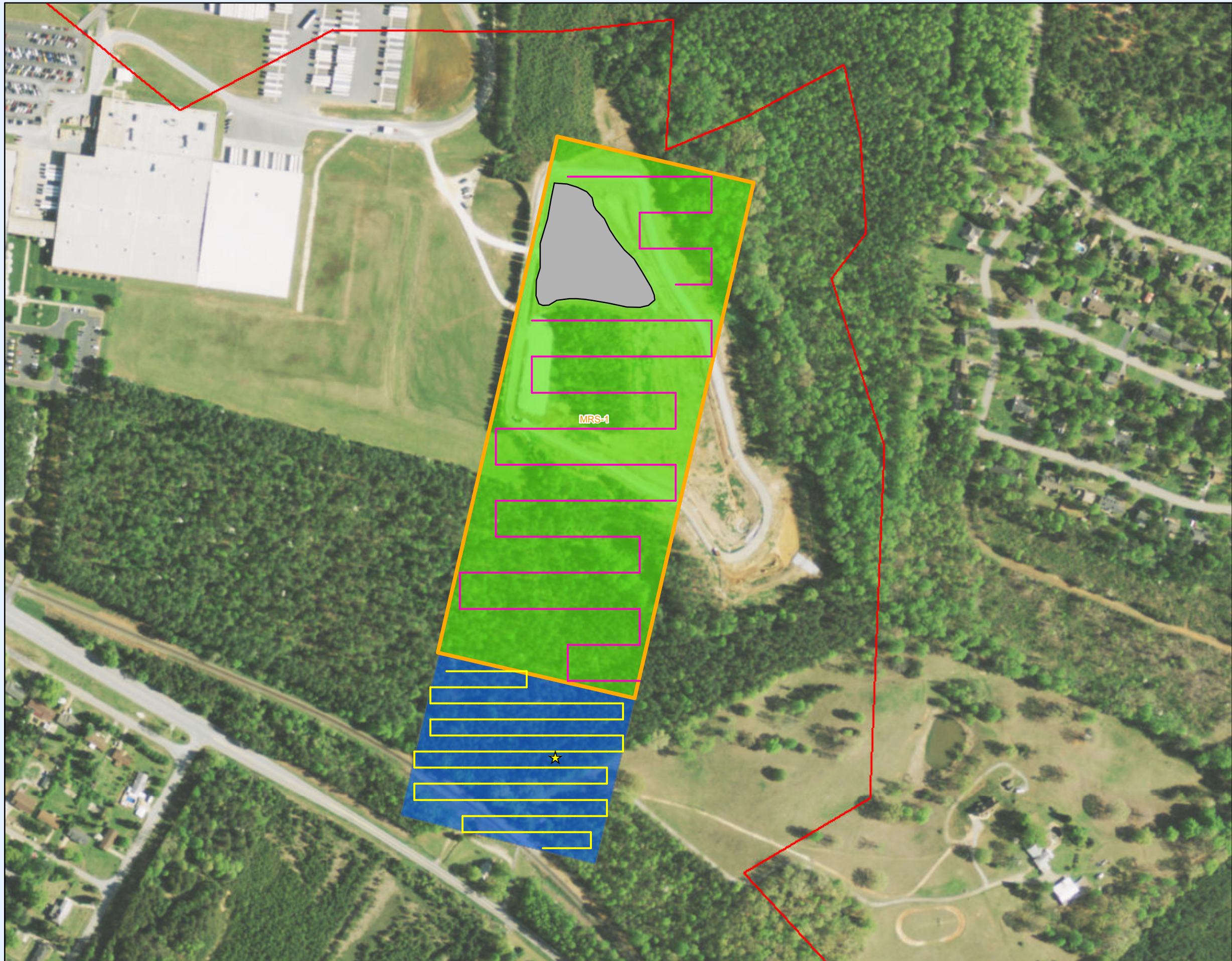
U.S. Army Corps of Engineers  
Engineering and  
Support Center Huntsville  
4820 University Square  
Huntsville, AL 35816



6302 Fairview Road, Suite 600 704.358.8240 Phone  
Charlotte, North Carolina 28210 704.358.8342 Fax  
zapata@zapatainc.com www.zapatainc.com











Transects

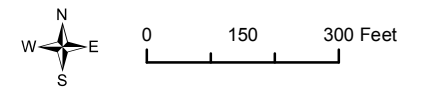


Former Camp Croft, SC  
MRS-1

<b>Project Number</b> 00017	<b>Date</b> DECEMBER 2010	<b>Exhibit</b> 4
--------------------------------	------------------------------	---------------------

**KEY**

-  Trash Pile - No Investigation
-  Suspected Location of Gas Chamber
-  112' Ground Recon Transects (1.46 miles)
-  50' Ground Recon Transects (1.20 miles)
-  PWS-defined MRS-1 Boundary
-  Ground Recon - 50' Transect Spacing
-  Ground Recon - 112' Transect Spacing
-  Approximate Former Camp Croft Boundary



**Source(s)**

USAESCH, USGS

**Projection**

UTM Zone 17 North, NAD83

**Note(s)**

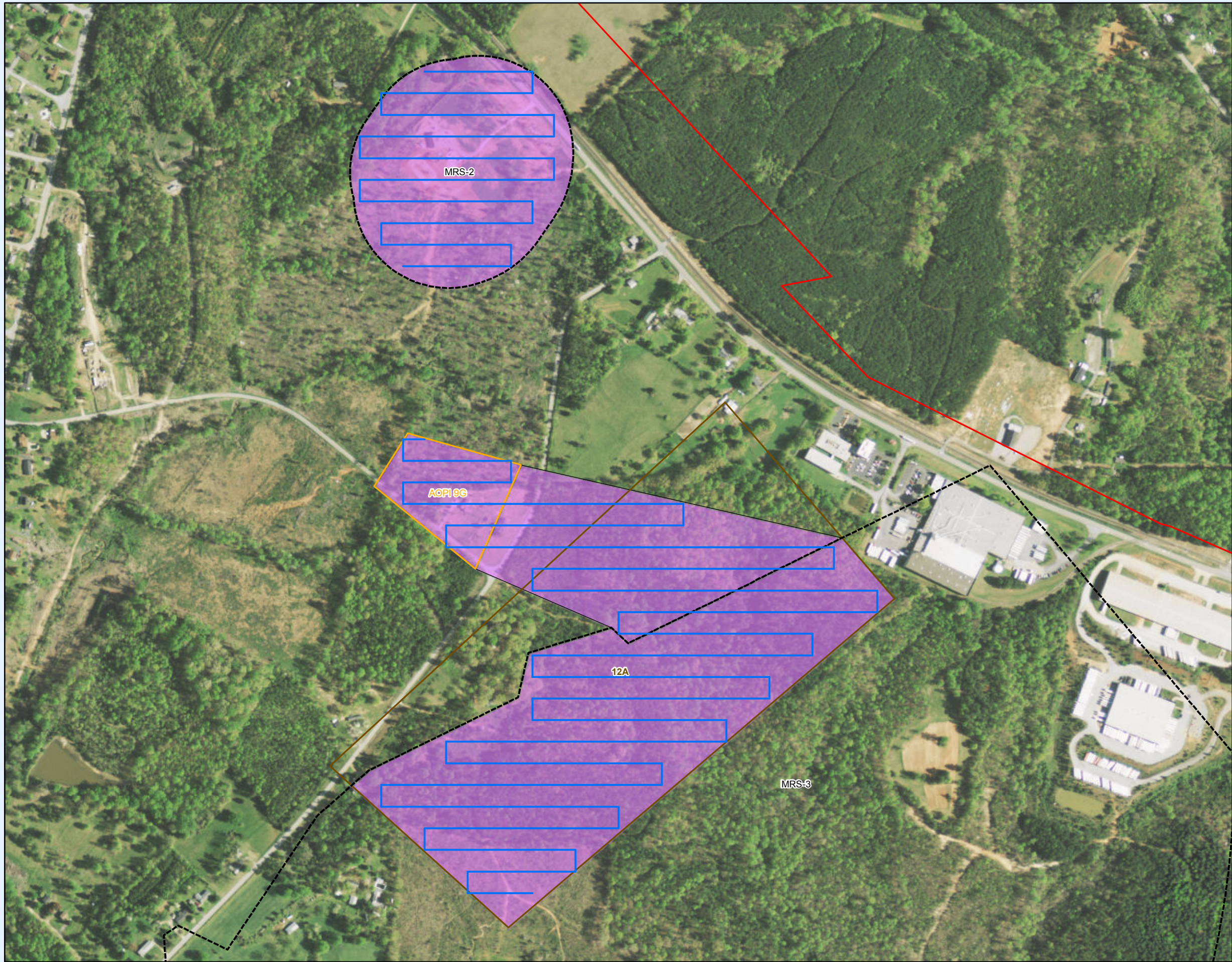
<b>Checked By</b> SCM	<b>Engineering Scale</b> AS SHOWN	<b>Drawn By</b> ATD
--------------------------	--------------------------------------	------------------------



U.S. Army Corps of Engineers  
Engineering and  
Support Center Huntsville  
4820 University Square  
Huntsville, AL 35816



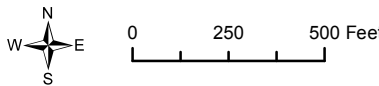
6302 Fairview Road, Suite 600 704.358.8240 Phone  
Charlotte, North Carolina 28210 704.358.8342 Fax  
zapata@zapatainc.com www.zapatainc.com



Former Camp Croft, SC  
MRS-2, Area of Potential Interest 9G & 12A

<b>Project Number</b> 00017	<b>Date</b> APRIL 2011	<b>Exhibit</b> 5
--------------------------------	---------------------------	---------------------

- KEY**
- 112' Ground Recon Transects (6.83 mi)
  - Approximate Park Boundary
  - MRS
  - Areas of Potential Interest
  - Former OOU
  - Approximate Former Camp Croft Boundary
  - Mag & Dig - 112' Transect Spacing



**Source(s)**  
USAESCH, USGS

**Projection**  
UTM Zone 17 North, NAD83

**Note(s)**

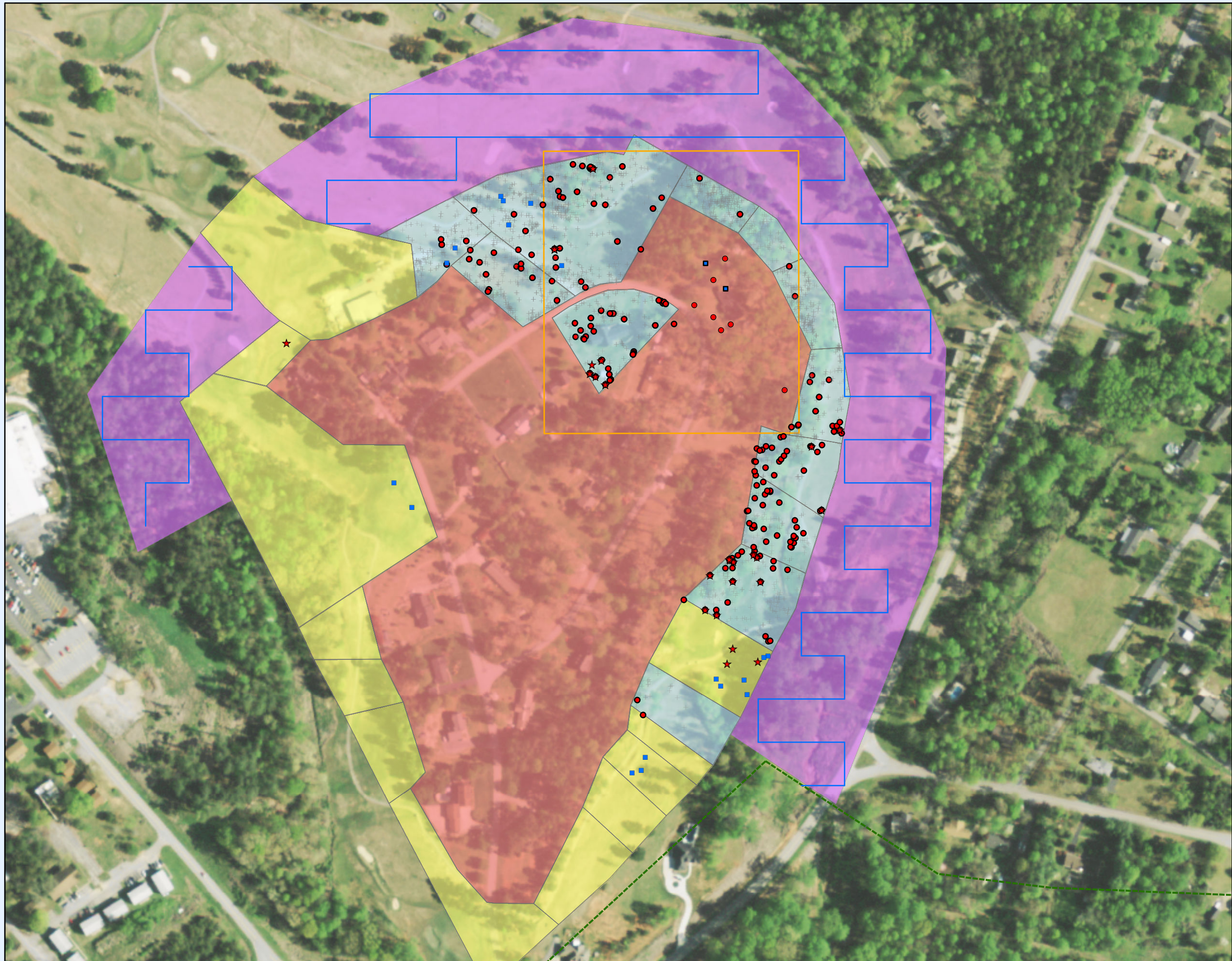
<b>Checked By</b> SCM	<b>Engineering Scale</b> AS SHOWN	<b>Drawn By</b> ATD
--------------------------	--------------------------------------	------------------------



U.S. Army Corps of Engineers  
Engineering and  
Support Center Huntsville  
4820 University Square  
Huntsville, AL 35816



6302 Fairview Road, Suite 600 704.358.8240 Phone  
Charlotte, North Carolina 28210 704.358.8342 Fax  
zapata@zapatainc.com www.zapatainc.com

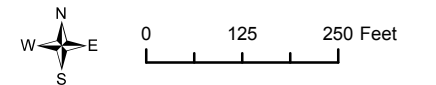


Former Camp Croft, SC  
Area of Potential Interest 3

<b>Project Number</b> 00017	<b>Date</b> APRIL 2011	<b>Exhibit</b> 6
--------------------------------	---------------------------	---------------------

**KEY**

- ★ UXO
- MD
- MEC
- + CD Item
- ~ 112' Ground Recon Transects (1.89 mi)
- - - Approximate Park Boundary
- - - MRS
- PWS-defined Former OOU3 Boundary
- HFA Completed Removal Action
- ZAPATA Pending Removal Action (DGM complete)
- ZAPATA Completed Removal Action
- Mag & Dig - 112' Transect Spacing



**Source(s)**

USAESCH, USGS

**Projection**

UTM Zone 17 North, NAD83

**Note(s)**

<b>Checked By</b> SCM	<b>Engineering Scale</b> AS SHOWN	<b>Drawn By</b> ATD
--------------------------	--------------------------------------	------------------------



U.S. Army Corps of Engineers  
Engineering and  
Support Center Huntsville  
4820 University Square  
Huntsville, AL 35816












6302 Fairview Road, Suite 600 704.358.8240 Phone  
Charlotte, North Carolina 28210 704.358.8342 Fax  
zapata@zapatainc.com www.zapatainc.com

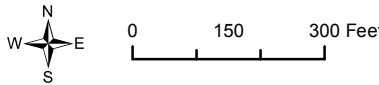


Former Camp Croft, SC  
Areas of Potential Interest 5 and 9E

<b>Project Number</b> 00017	<b>Date</b> APRIL 2011	<b>Exhibit</b> 7
--------------------------------	---------------------------	---------------------

**KEY**

-  Proposed Site Office Trailer Location
-  173 ft Transect (0.29 mi)
-  112 ft Transect (0.47 mi)
-  MRS
-  Approximate Former Camp Croft Boundary
-  Areas of Potential Interest
-  Mag & Dig - 112' Transect Spacing
-  Mag & Dig - 173' Transect Spacing
-  Mag & Dig - 416' Transect Spacing



**Source(s)**

USAESCH, USGS

**Projection**

UTM Zone 17 North, NAD83

**Note(s)**

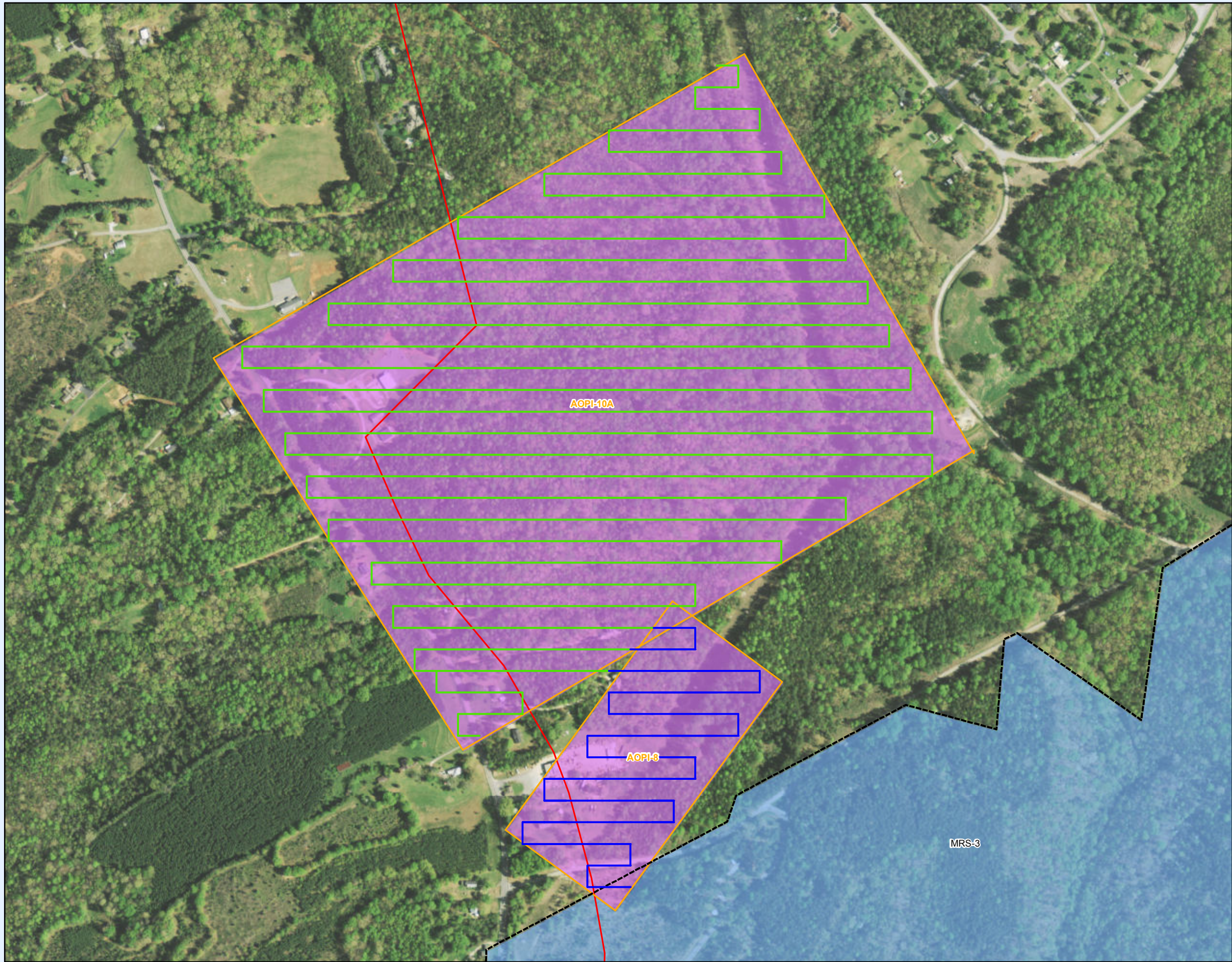
<b>Checked By</b> SCM	<b>Engineering Scale</b> AS SHOWN	<b>Drawn By</b> ATD
--------------------------	--------------------------------------	------------------------



U.S. Army Corps of Engineers  
Engineering and  
Support Center Huntsville  
4820 University Square  
Huntsville, AL 35816



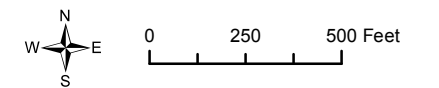
6302 Fairview Road, Suite 600 704.358.8240 Phone  
Charlotte, North Carolina 28210 704.358.8342 Fax  
zapata@zapatainc.com www.zapatainc.com



Former Camp Croft, SC  
Areas of Potential Interest 8 and 10A

<b>Project Number</b> 00017	<b>Date</b> APRIL 2011	<b>Exhibit</b> 8
--------------------------------	---------------------------	---------------------

- KEY**
- 112' Transect (12.13 mi)
  - 112' Transect (2.12 mi)
  - MRS
  - Areas of Potential Interest
  - Approximate Former Camp Croft Boundary
  - Mag & Dig - 112' Transect Spacing
  - Mag & Dig - 416' Transect Spacing



**Source(s)**  
USAESCH, USGS

**Projection**  
UTM Zone 17 North, NAD83

**Note(s)**

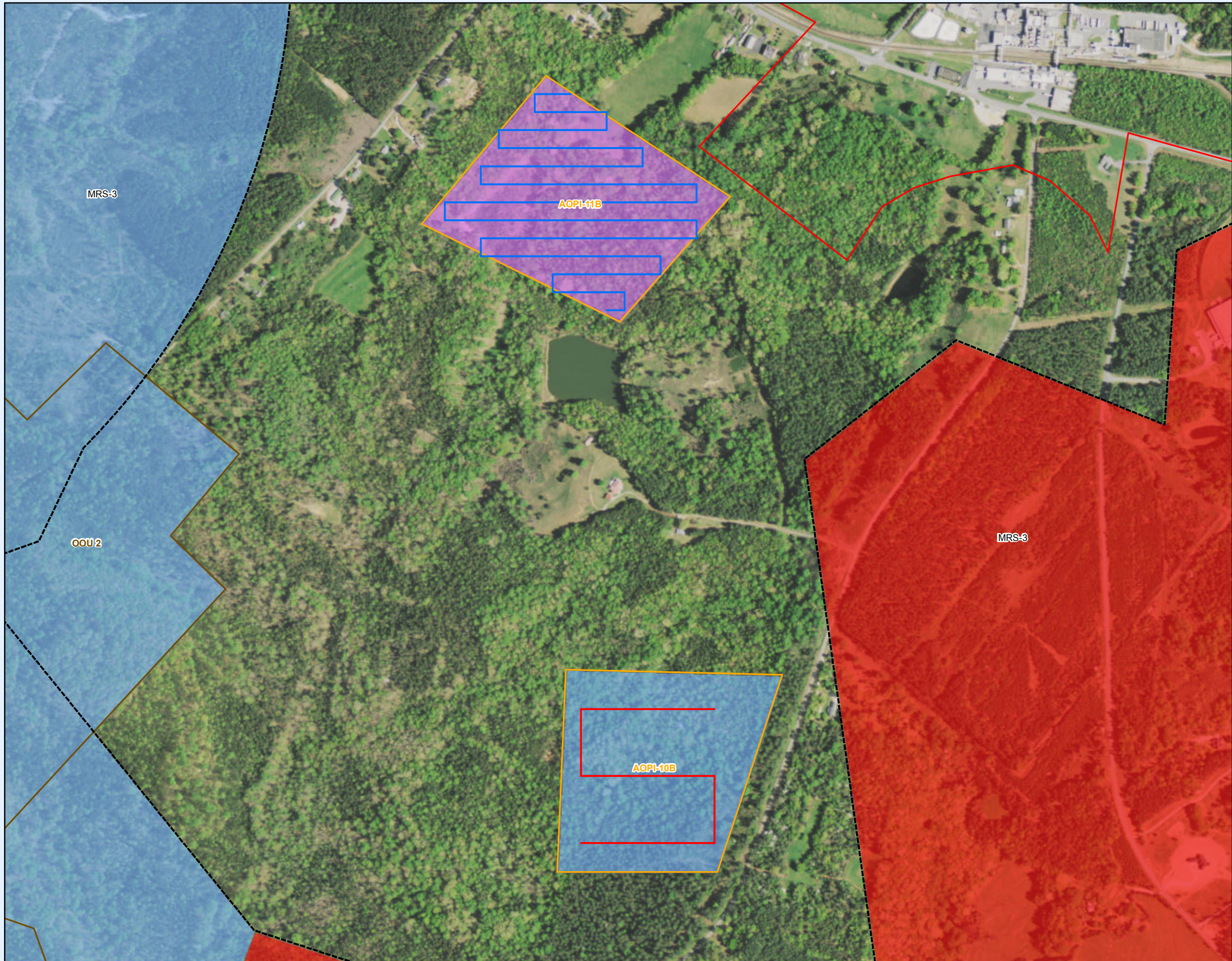
<b>Checked By</b> SCM	<b>Engineering Scale</b> AS SHOWN	<b>Drawn By</b> ATD
--------------------------	--------------------------------------	------------------------



U.S. Army Corps of Engineers  
Engineering and  
Support Center Huntsville  
4820 University Square  
Huntsville, AL 35816



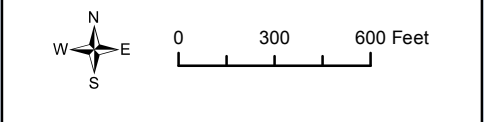
6302 Fairview Road, Suite 600 704.358.8240 Phone  
Charlotte, North Carolina 28210 704.358.8342 Fax  
zapata@zapatainc.com www.zapatainc.com



Former Camp Croft, SC  
 Areas of Potential Interest 10B and 11B

<b>Project Number</b> 00017	<b>Date</b> APRIL 2011	<b>Exhibit</b> 9
--------------------------------	---------------------------	---------------------

- KEY**
- 416' Transect (0.63 mi)
  - 112' Transect (2.42 mi)
  - MRS
  - Former OOU
  - Areas of Potential Interest
  - Approximate Former Camp Croft Boundary
  - Ground Recon - 416' Transect Spacing
  - Mag & Dig - 112' Transect Spacing
  - Mag & Dig - 416' Transect Spacing



**Source(s)**  
 USAESCH, USGS

**Projection**  
 UTM Zone 17 North, NAD83

**Note(s)**

<b>Checked By</b> SCM	<b>Engineering Scale</b> AS SHOWN	<b>Drawn By</b> ATD
--------------------------	--------------------------------------	------------------------

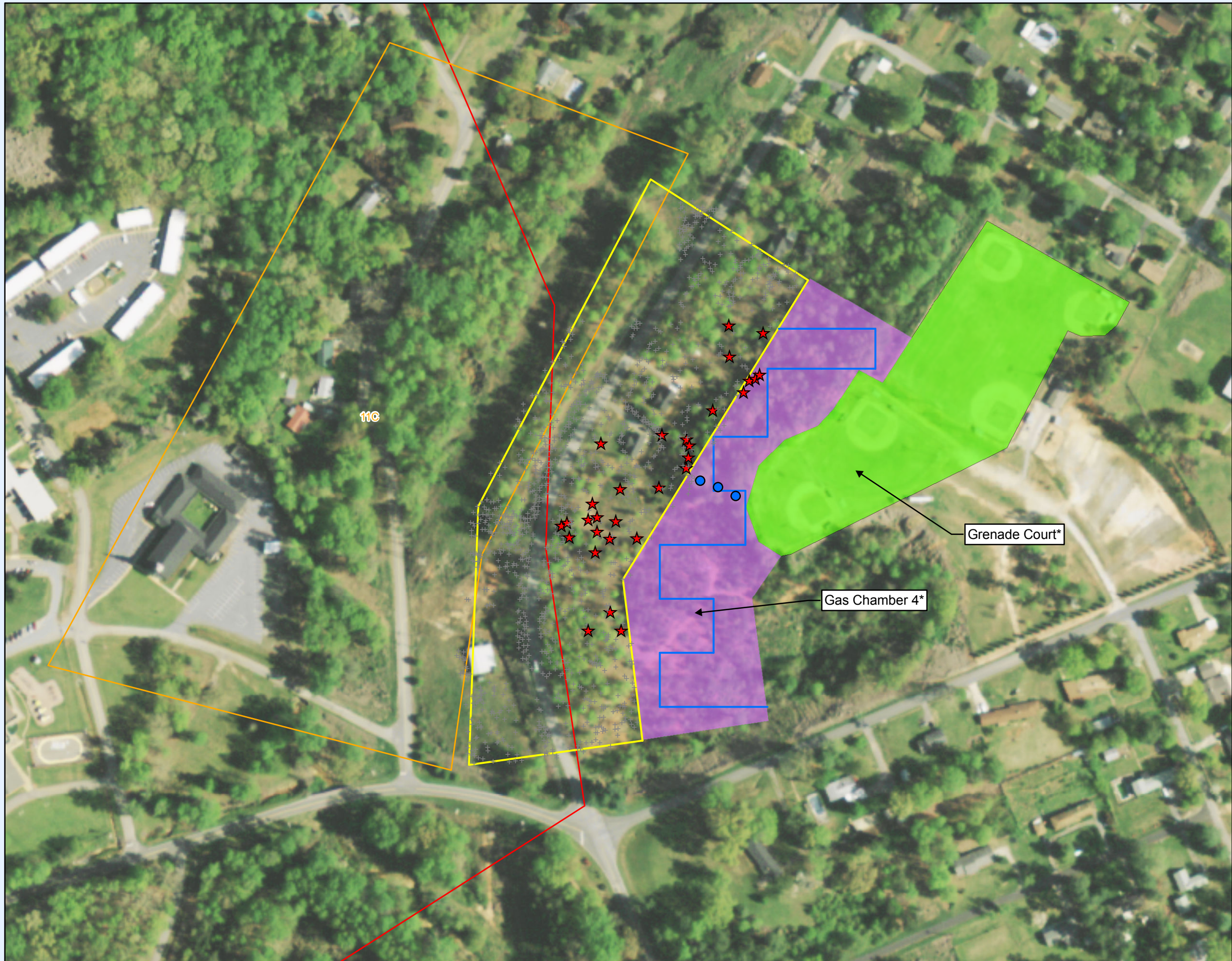


U.S. Army Corps of Engineers  
 Engineering and  
 Support Center Huntsville  
 4820 University Square  
 Huntsville, AL 35816



**ZAPATA**  
 TRUST • INTEGRITY • QUALITY

6302 Fairview Road, Suite 600 704.358.8240 Phone  
 Charlotte, North Carolina 28210 704.358.8342 Fax  
 zapata@zapatainc.com www.zapatainc.com



Former Camp Croft, SC  
Area of Potential Interest 11C

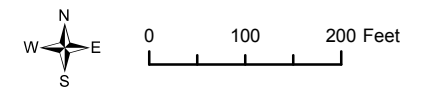
<b>Project Number</b> 00017	<b>Date</b> APRIL 2011	<b>Exhibit</b> 10
--------------------------------	---------------------------	----------------------

**KEY**

- Foxholes (Observed During Site Visit)
- ★ MD Items
- + CD Items
- ~ 112' Transect (0.38 mi)
- ▭ Removal Action OOU11C Boundary
- ▭ Areas of Potential Interest
- ▭ Approximate Former Camp Croft Boundary
- ▭ DGM (100%)
- + Mag & Dig - 112' Transect Spacing

\* Boundaries and Items are defined in the GIS-based Historical Photographic Analysis dated October 2005.

The PWS-defined boundary may be improperly located. Based on findings during ZAPATA's previous removal actions in OOU11C, the area of potential interest may lie to the east of both the PWS-defined boundary and the removal action boundary. However, the USAESCH has requested the PWS-defined boundary be included in future investigations along with those proposed activities shown.



**Source(s)**

USAESCH, USGS

**Projection**

UTM Zone 17 North, NAD83

**Note(s)**

<b>Checked By</b> SCM	<b>Engineering Scale</b> AS SHOWN	<b>Drawn By</b> ATD
--------------------------	--------------------------------------	------------------------



U.S. Army Corps of Engineers  
Engineering and  
Support Center Huntsville  
4820 University Square  
Huntsville, AL 35816



6302 Fairview Road, Suite 600 704.358.8240 Phone  
Charlotte, North Carolina 28210 704.358.8342 Fax  
zapata@zapatainc.com www.zapatainc.com






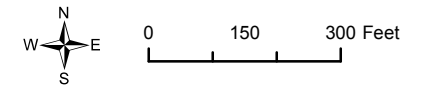


Former Camp Croft, SC  
Area of Potential Interest 11D

<u>Project Number</u> 00017	<u>Date</u> APRIL 2010	<u>Exhibit</u> 11
--------------------------------	---------------------------	----------------------

**KEY**

-  112' Transect (1.17 mi)
-  Areas of Potential Interest
-  Mag & Dig / DGM - 112' Transect Spacing\*



**Source(s)**

USAESCH, USGS

**Projection**

UTM Zone 17 North, NAD83

**Note(s)**

**\* Mag & Dig will be conducted in wooded areas and DGM will be conducted on the golf course.**

<u>Checked By</u> SCM	<u>Engineering Scale</u> AS SHOWN	<u>Drawn By</u> ATD
--------------------------	--------------------------------------	------------------------



U.S. Army Corps of Engineers  
Engineering and  
Support Center Huntsville  
4820 University Square  
Huntsville, AL 35816
















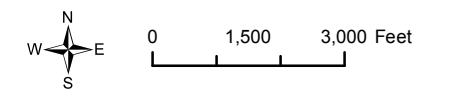
6302 Fairview Road, Suite 600 704.358.8240 Phone  
Charlotte, North Carolina 28210 704.358.8342 Fax  
zapata@zapatainc.com www.zapatainc.com

Former Camp Croft, SC  
MRS-3

<b>Project Number</b> 00017	<b>Date</b> APRIL 2011	<b>Exhibit</b> 12
--------------------------------	---------------------------	----------------------

**KEY**

-  416' Transect - Mag & Dig (99.59 mi)
-  416' Transect - Recon (114.20 mi)
-  MRS
-  Former OOU
-  Areas of Potential Interest
-  Approximate Former Camp Croft Boundary
-  Lake
-  Ground Recon - 50' Transect Spacing
-  Ground Recon - 112' Transect Spacing
-  Ground Recon - 416' Transect Spacing
-  Mag & Dig - 112' Transect Spacing
-  Mag & Dig - 173' Transect Spacing
-  Mag & Dig - 416' Transect Spacing



**Source(s)**

USAESCH, USGS

**Projection**

UTM Zone 17 North, NAD83

**Note(s)**

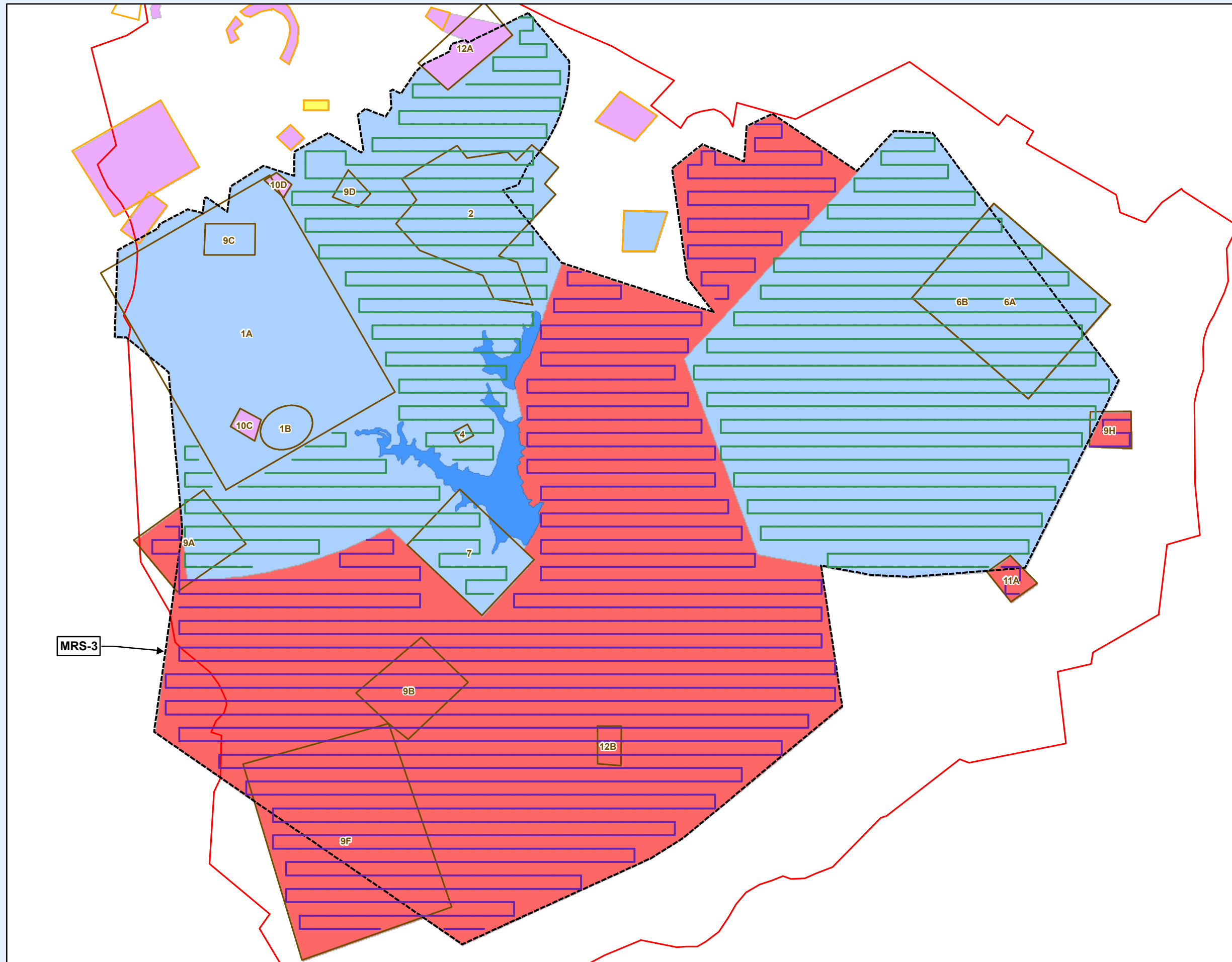
<b>Checked By</b> SCM	<b>Engineering Scale</b> AS SHOWN	<b>Drawn By</b> ATD
--------------------------	--------------------------------------	------------------------



U.S. Army Corps of Engineers  
Engineering and  
Support Center Huntsville  
4820 University Square  
Huntsville, AL 35816









6302 Fairview Road, Suite 600 704.358.8240 Phone  
Charlotte, North Carolina 28210 704.358.8342 Fax  
zapata@zapatainc.com www.zapatainc.com

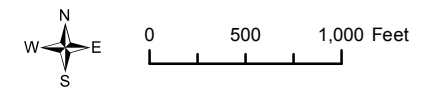


Former Camp Croft, SC  
Lake Johnson and Lake Craig

<b>Project Number</b> 00017	<b>Date</b> APRIL 2011	<b>Exhibit</b> 13
--------------------------------	---------------------------	----------------------

**KEY**

-  416' Transect
-  MRS
-  Approximate Former Camp Croft Boundary
-  Lake
-  Ground Recon - 416' Transect Spacing
-  Mag & Dig - 416' Transect Spacing



**Source(s)**

USAESCH, USGS

**Projection**

UTM Zone 17 North, NAD83

**Note(s)**

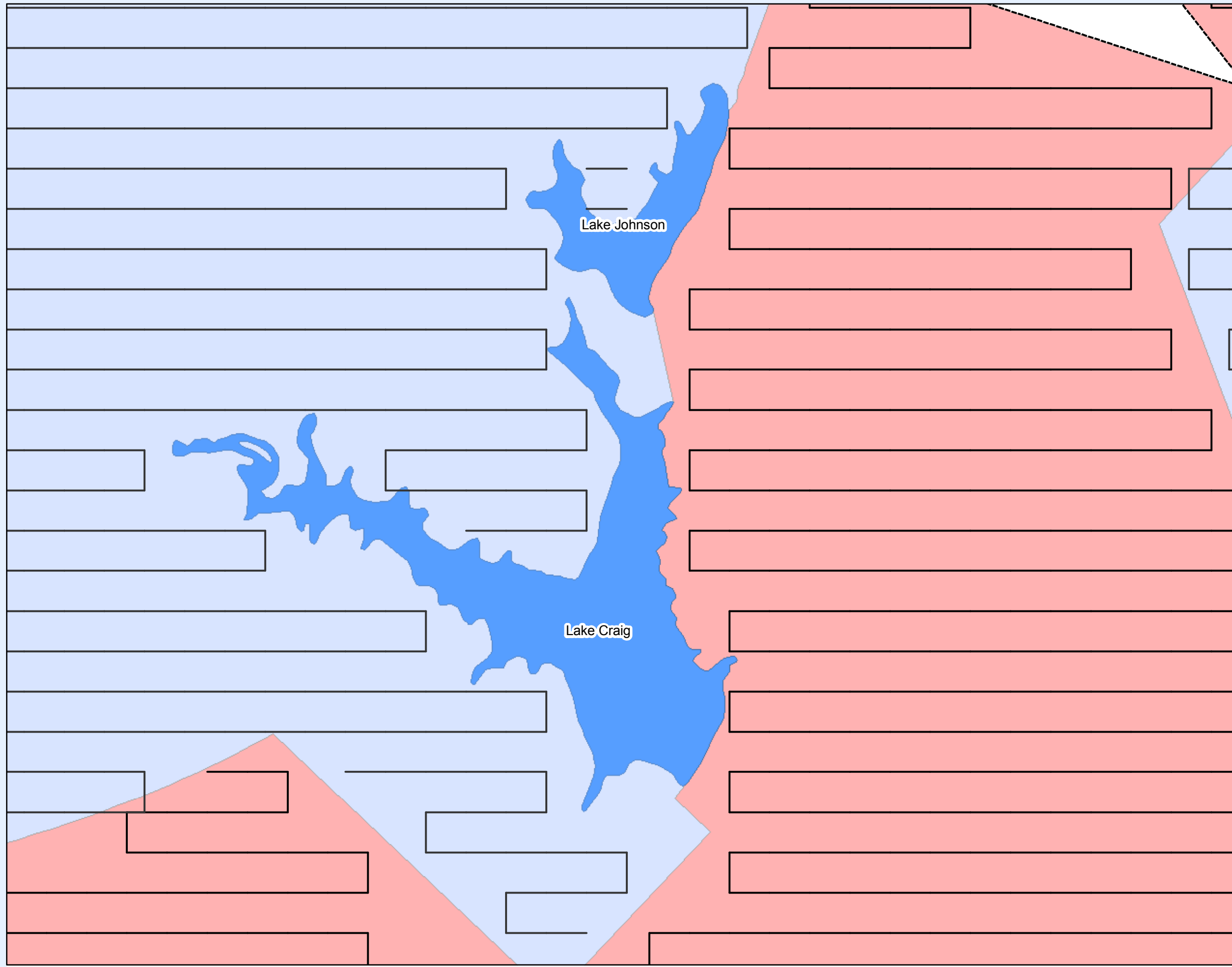
<b>Checked By</b> SCM	<b>Engineering Scale</b> AS SHOWN	<b>Drawn By</b> ATD
--------------------------	--------------------------------------	------------------------



U.S. Army Corps of Engineers  
Engineering and  
Support Center Huntsville  
4820 University Square  
Huntsville, AL 35816



6302 Fairview Road, Suite 600 704.358.8240 Phone  
Charlotte, North Carolina 28210 704.358.8342 Fax  
zapata@zapatainc.com www.zapatainc.com



**Exhibit 14: Visual Sample Plan (VSP) Input and Results**

Munition	Range to No More Than 1 Hazardous Fragment/600 ft <sup>2</sup> Area	1.5 Hazardous Fragment Range (ft)	Survey Design	Survey Area Geometry	Anomaly Distribution	Background Anomaly Density (anom/acre)	False Negative (%)	Decision Rule: % Confidence <sup>1</sup>	Detection Probability <sup>2</sup>	Calculated Transect Spacing (ft)
60mm	166.3	250	Parallel	Circular	Bivariate Normal	15	5	95	90	416
37mm	114	171	Parallel	Circular	Bivariate Normal	15	5	95	90	242
MKII Grenade	62	93	Parallel	Circular	Bivariate Normal	15	5	95	90	112
Rifle Grenade	87	130.5	Parallel	Circular	Bivariate Normal	15	5	95	90	173

Munition	Range to No More Than 1 Hazardous Fragment/600 ft <sup>2</sup> Area	1.5 Hazardous Fragment Range (ft)	1.5 Hazardous Fragment range (m)	Average (ft) Excluding TP	Average (m) Excluding TP
37 mm M54	114	171	52.13414634	156.75	47.78963415
37 mm M63 TP	95	142.5	43.44512195	156.75	47.78963415
37 mm Mk I, LE Practice	68	102	31.09756098	102	31.09756098
37 mm MK II (0.053lb)	90	135	41.15853659	149.5	45.57926829
60 mm M49A2	150	225	68.59756098	249.5	76.06707317
60 mm M49A3	166	249	75.91463415	249.5	76.06707317
60 mm M49A5	183	274.5	83.68902439	249.5	76.06707317
60 mm TP M50	79	118.5	36.12804878	118.5	36.12804878
57 mm M306	162	243	74.08536585	243	74.08536585
81 mm M362A1	243	364.5	111.1280488	345.6	105.3658537
81 mm M374	234	351	107.0121951	345.6	105.3658537
81 mm M43	230	345	105.1829268	345.6	105.3658537
81 mm M45	224	336	102.4390244	345.6	105.3658537
81 mm M56	221	331.5	101.0670732	345.6	105.3658537
81 mm TP M43A1	89	133.5	40.70121951	133.5	40.70121951
MKII Grenade	62	93	28.35365854	93	28.35365854
Rifle Grenade Robust	87	130.5	39.78658537	130.5	39.78658537

Notes:

<sup>1</sup>Anomalies above background

<sup>2</sup> 350 anomalies above background